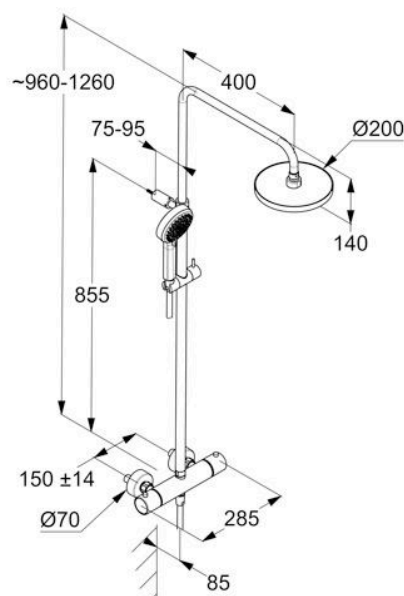


KLUDI-DIVE S THERMOSTAT DUAL SHOWER SYSTEM DN 15

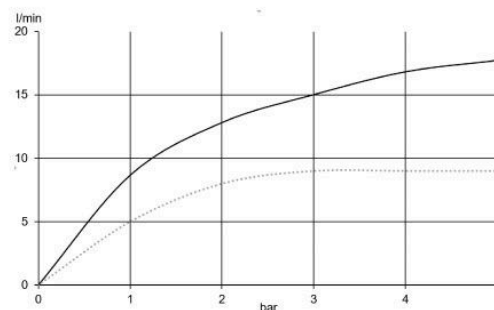
6807905-00

Shower Systems



Technical Specification

Series:	KLUDI-DIVE
Color:	Chrome
Dimensions:	57.5 x 28.5 x 126cm
Shape:	Round
Water Efficiency:	Standard
Installation Type:	Wall-Mounted
Number of Spray Modes:	3



Name:

- KLUDI-DIVE
- Thermostat Dual Shower System DN 15
- wall fastening
- with horizontally and vertically adjustable tube
- horizontal and vertical adjustable slider
- temperature control handle with hot water safety device 38° C
- with ceramic shut-off valve as rotary valve 90°/90°
- shower outlet G 1/2
- hand shower rotary valve

Dimensions: All dimensions in mm. Tolerance of vitreous china & fireclay items: $\hat{A}\pm 5\%$ for below 200mm and $\hat{A}\pm 3\%$ for above 200mm; for all other items tolerance $\hat{A}\pm 1\%$. Note: Due to a continuing development program to improve design and performance, the manufacturer reserves all rights to vary specifications without prior information. Please note accessories are for photographic use only.

- plastic-coated
- with conical nuts
- hand shower sDIVE 3S
- with three spray patterns: Body/Hair/Skin
- with push-button switch
- quick and easy cleaning system
- head shower DN 15
- Ø 250 mm
- with one spray mode
- quick and easy cleaning system
- connection G 1/2

Dimensions: All dimensions in mm. Tolerance of vitreous china & fireclay items: $\hat{\pm}$ 5% for below 200mm and $\hat{\pm}$ 3% for above 200mm; for all other items tolerance $\hat{\pm}$ 1%. Note: Due to a continuing development program to improve design and performance, the manufacturer reserves all rights to vary specifications without prior information. Please note accessories are for photographic use only.